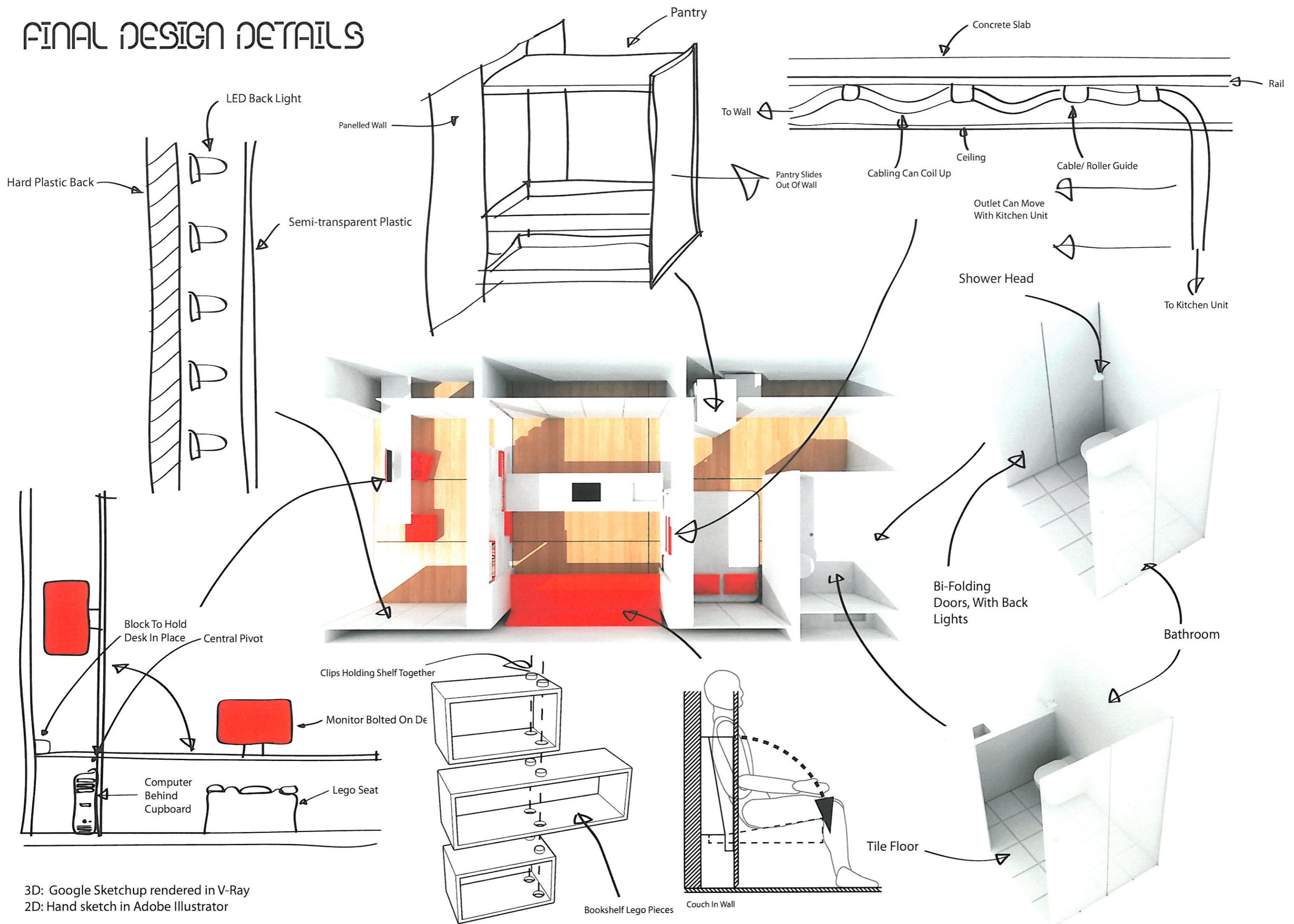


FINAL DESIGN DETAILS



3D: Google Sketchup rendered in V-Ray
 2D: Hand sketch in Adobe Illustrator

FINAL EVALUATION

Aesthetics

This design is an innovative solution to maximise space in a 32 square meter apartment. It meets the requirements of the brief because it balances the design aesthetics of Yuko Shibata and the De Stijl movement with functionality. Similar to Shibata's apartment, it transforms through perforated sliding walls/bookshelves; they define the separate spaces yet allow natural light to filter through the apartment. Linear forms and clean lines create an ordered clutter free aesthetic, which contrasts with the busy environment outside. The repeating rectilinear storage panels along the length of the apartment plus the grid on the floor (created by the tracks for the bookshelves) brings a sense of calm order. The panelling has now been extended into the bathroom; unifying the space and providing storage away from the wet area.

The Lego like shelving, in contrast, adds asymmetry and innovation to the space. Located within a rectangular framework; this asymmetrical composition echoes the design elements of the de Stijl movement. The Lego concept also unifies the room as it is repeated in the kitchen unit and the furnishings. The shelving can be transformed therefore allowing the client some flexibility and creativity.

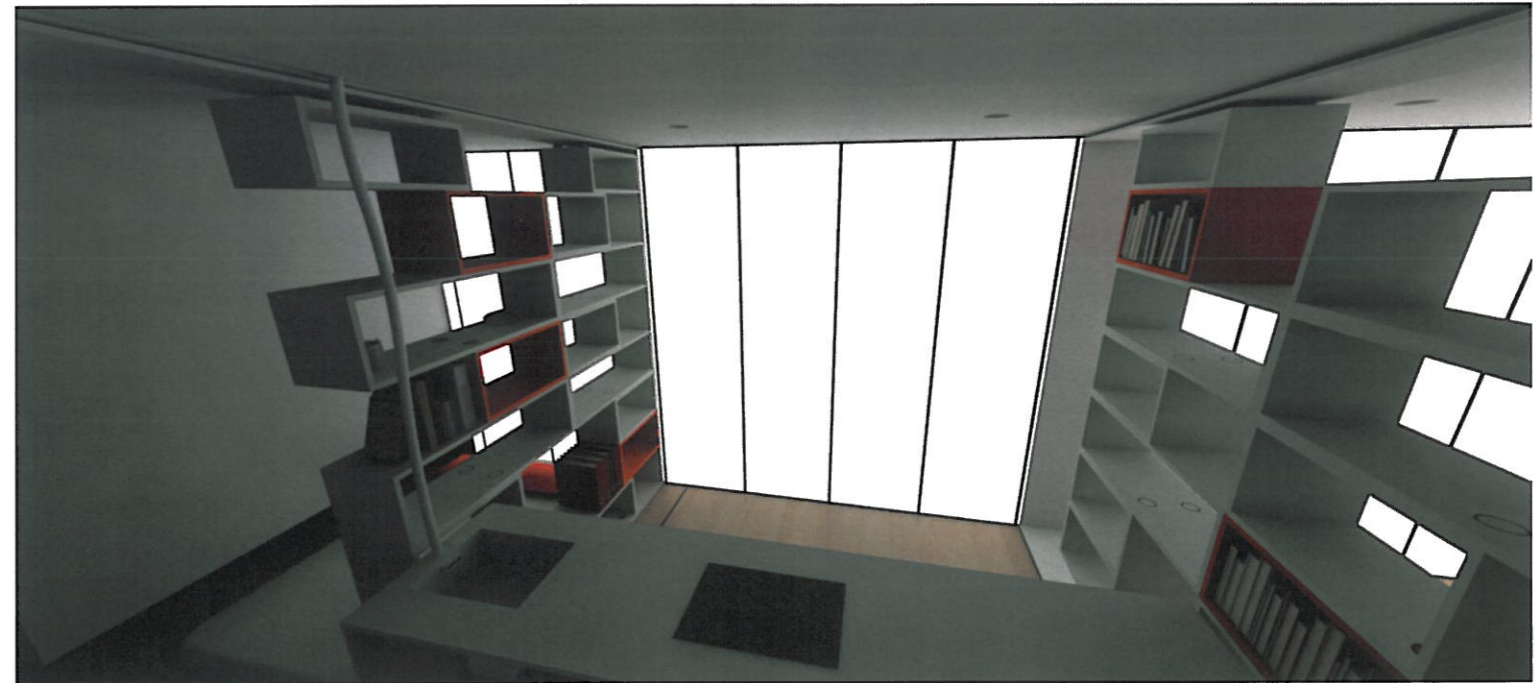
By unifying the moving elements and hiding away anything that is not being used, the apartment retains a sense of simplicity; this is reinforced through the neutral white colour palette with surfaces and walls reflecting light and contrasting with the natural wood finish in the floor. However, the bright red shelving lifts the tone of the room, reflecting both de Stijl and Lego; black has not been used as it was essential that the space be light, not dark.

A simple combination of materials has been used (as shown in the developments) to retain the minimalist aesthetics. The glossy surfaces reflect light and the translucent Perspex panelling on the cupboards gives a modern innovative touch. Unlike glass which can break easily, the Perspex is solid and durable. Lighting in this apartment can be used to change the mood; the ceiling lights give an even coverage across the apartment while the filtered lighting from the cupboards adds a soft glow.

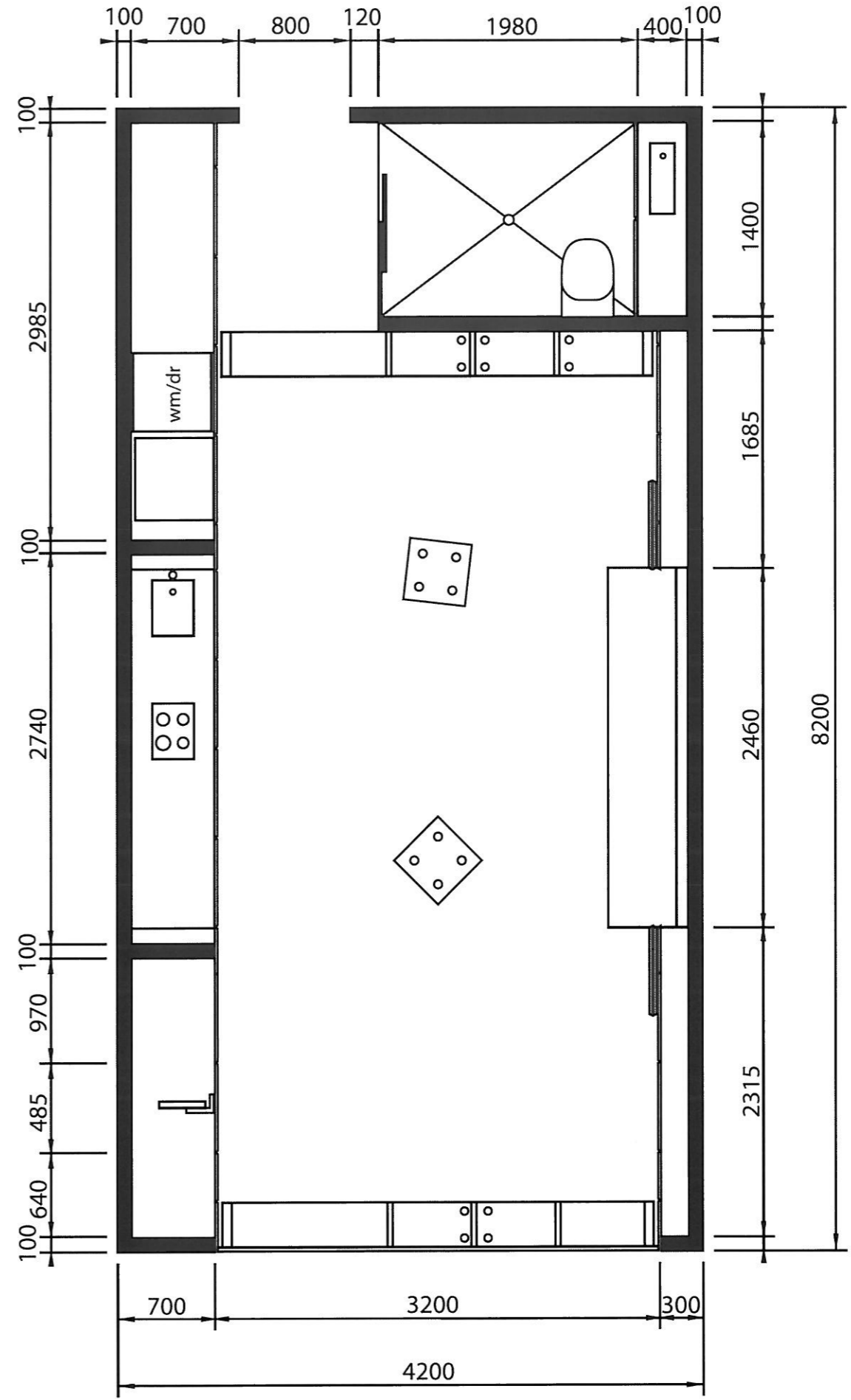
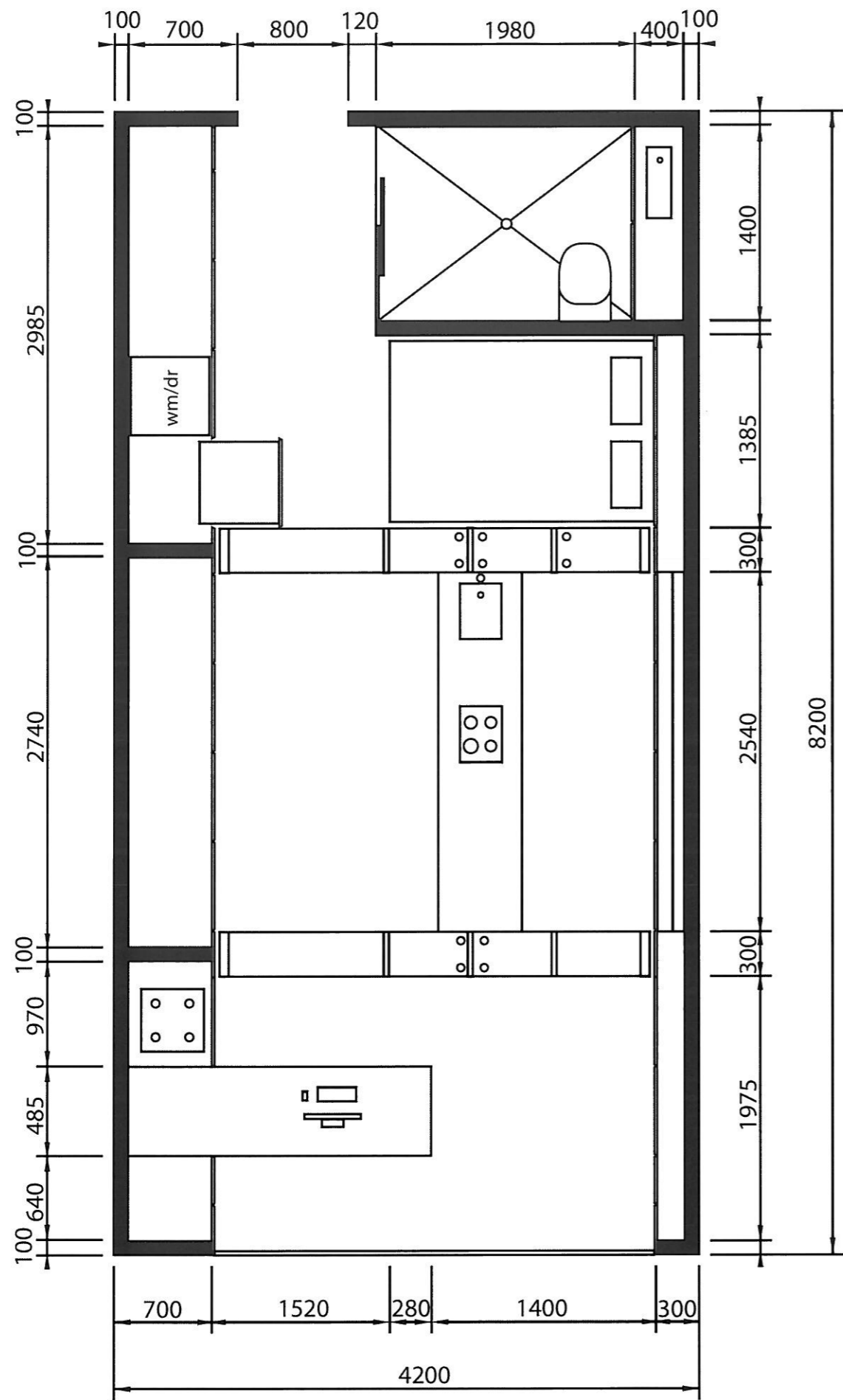
Function

The apartment is highly functional and can easily transform between a home and a workspace, simply by sliding the walls. The sliding mechanism is mechanical, therefore robust and less prone to electronic error. The fixed services are to the rear of the apartment where natural light is not so essential. The entrance is spacious with storage for shoes, coats and bags; it also gives a glimpse of the apartment beyond. The bathroom, while compact, maximises space through the overhead shower, toilet with inbuilt cistern and hidden storage cupboards. When the internal light is on, the Perspex panelling (like Shoji panels in traditional Japanese architecture) creates the effect of natural light at the rear of the apartment. When the walls/shelves slide all the way back, the client has a large open plan living area to watch movies and use the media centre, a couch has now been added for the client's comfort. In workspace mode, the large desk flips down to face the window, allowing natural light and space for inspiration. In whatever state of transformation, the items on the shelving remain static, offering ample space for the client's books and artworks. By way of hidden cupboards behind the panelling, the client also has extensive storage space. The apartment is ergonomic except when the kitchen is fully extended as the client will need to walk around the bookshelf to enter it. This compromise was necessary to fit two people into the dining area. In the other modes, the client can easily move around as the layout is logical with the bedroom and bathroom to the rear. By sliding the bed under the bathroom wall, it becomes more functional, as the client does not need to remake it every day.

In conclusion, this unique apartment fits the client's requirements. It is aesthetically pleasing, highly functional and a place where the client can relax and rejuvenate but also work. This apartment is a stylish blank canvas waiting for client to stamp his mark on it.



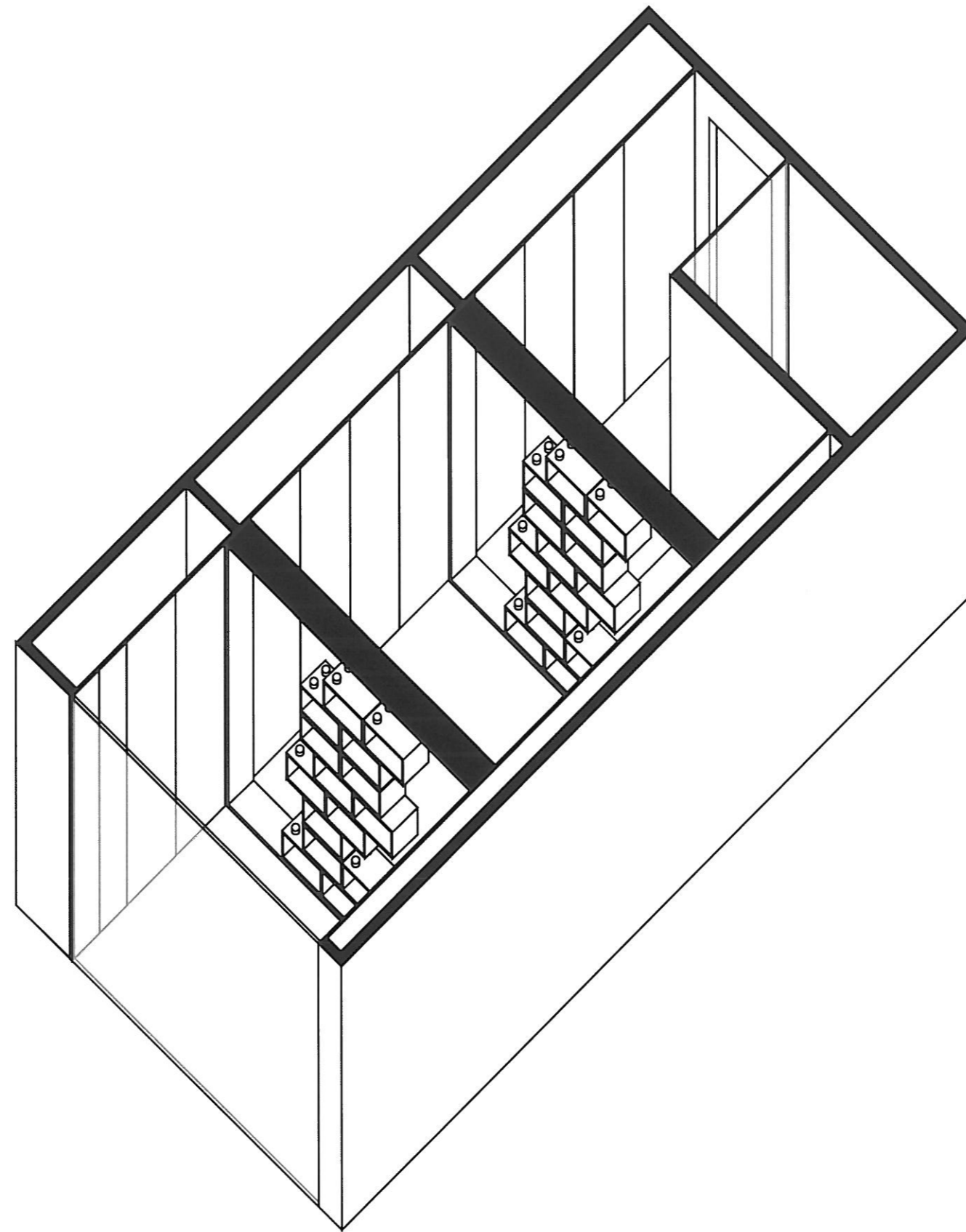
Interior view with back lit perspex doors (Rendered with Vray)



NAME: SAMUEL BLOK

TRANSFORMABLE APARTMENT FLOOR PLAN

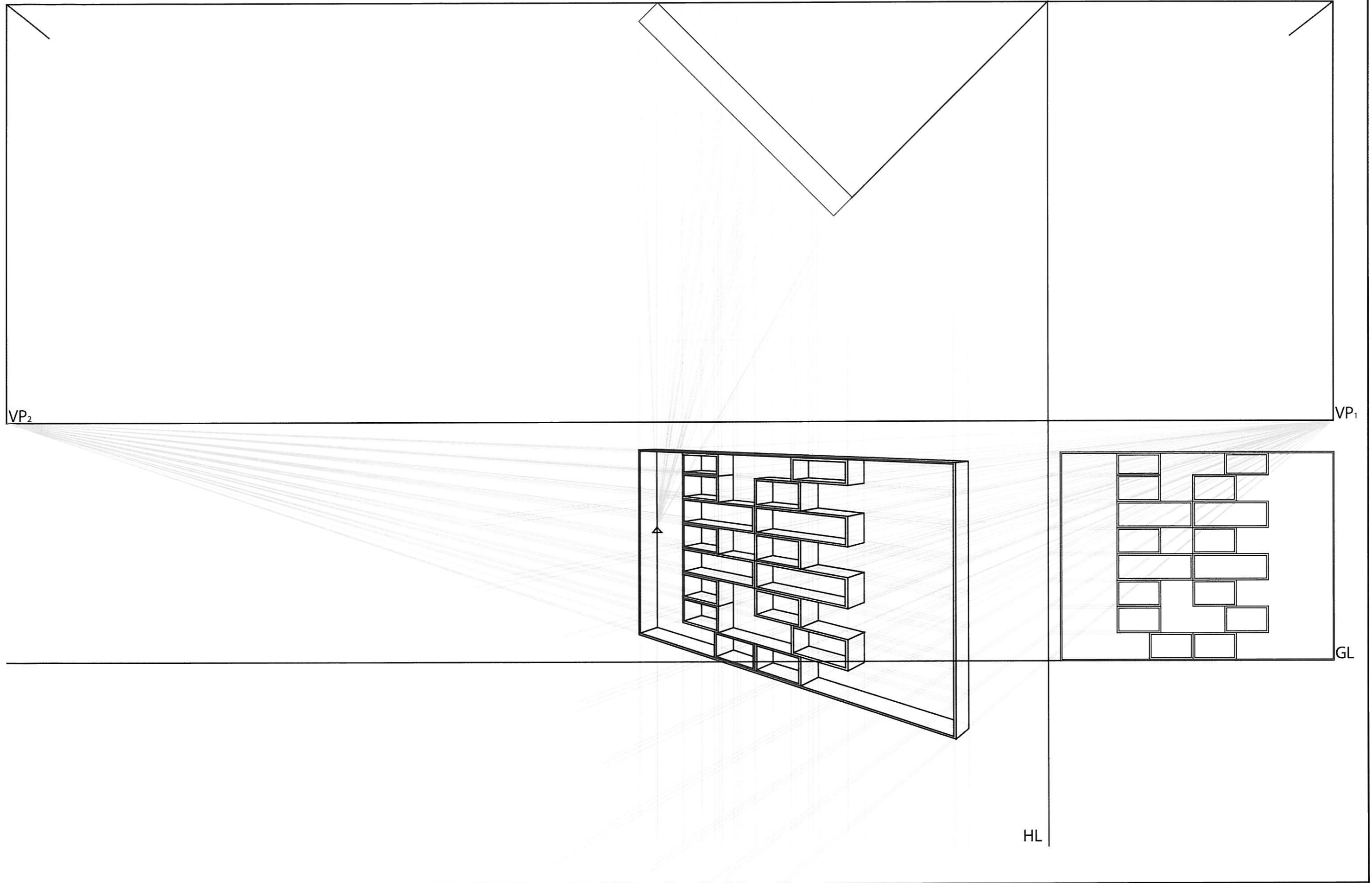
SCALE: 1:40



NAME: SAMUEL BLOK

TRANSFORMABLE APARTMENT PLANOMETRIC

SCALE: 1:50



NAME: SAMUEL BLOK

BOOKSHELF DESIGN PARALLEL PROJECTION

SCALE: 1:40